



# CORONADO<sup>®</sup>

STONE PRODUCTS



Colosseum Travertine - Roman

OVER  
65 YEARS  
EST. 1959



# TABLE OF CONTENTS



Sonora Sandstone  
Blue Heron



Smooth Limestone  
Cream



Barn WoodStone  
Rustic Farmhouse



Italian Villa®  
Volterra



Weathered Edge  
Coal Canyon

## NEW PRODUCTS

Urbana Smooth .....	1
Urbana Split .....	2
Sonora Sandstone .....	3
Element Ledgestone .....	4

## THE CLASSIC SERIES

8" Classic Jerusalem .....	7
Smooth Limestone .....	8
French Limestone .....	9
Chiseled Limestone .....	10
Hill Country Limestone .....	11
Colosseum Travertine .....	12
Aegean Coral, Caribbean Coral .....	13
The Getty Stone .....	14
Sand Canyon Flagstone .....	15
Decorative Bands .....	16

## WOODSTONE SERIES

Barn WoodStone .....	19
Rough Cut WoodStone .....	20
Refined WoodStone .....	21 - 22

## THE DESIGNER SERIES

Playa Vista Limestone .....	25
Amalfi Ledge .....	26
3" Split Limestone .....	27
6" Split Limestone .....	28
Prairie Stone .....	29
Industrial Ledge .....	30

## CUT STONE SERIES

Pavilion Stone .....	31 - 32
Canyon Cobble .....	33
Osage .....	34

## VILLA STONE SERIES

Venetian Villa® .....	37 - 38
Italian Villa® .....	39 - 40
Tuscan Villa® .....	41 - 42
French Country Villa® .....	43 - 44

## LEDGESTONE SERIES

Mountain Strip Stone .....	47
Coronado Strip Stone .....	48
Pro-Ledge® .....	49 - 50
Coronado Honey Ledge .....	51 - 52
Sawtooth Ledge .....	53
Artisan Ledge .....	54
Quick Stack® .....	55 - 56
Virginia Ledge .....	57
Sierra Ledge .....	58
Eastern Mountain Ledge® .....	59 - 60



Country Rubble  
Aspen



Minnesota Fieldstone  
Coastal Brown



Special Used Brick  
Rustic Blend



Brick Corner  
Rustic Blend



Flagstone Wall Cap  
Lompoc

# TABLE OF CONTENTS

## LEDGESTONE SERIES CONT.

Old World Ledge .....	61 - 62
Old Country Ledge .....	63 - 64
Rocky Mountain Ledge .....	65
Canyon Ledge .....	66
Idaho Drystack .....	67 - 68
Weathered Edge .....	69 - 70

## ASHLAR & RUBBLE SERIES

Country Rubble .....	73 - 74
Texas Rubble .....	75
Carolina Rubble .....	76
English Rubble .....	77 - 78
Santa Barbara .....	79 - 80
Country Castle .....	81
Belgian Castle .....	82

## IRREGULAR SHAPED STONE SERIES

Minnesota Fieldstone .....	85 - 86
Appalachian Fieldstone .....	87 - 88
Split Fieldstone .....	89
Viejo Ranch .....	90
River Rock .....	91
Creek Rock .....	92

## STONE COMBINATIONS

Stone Combinations .....	95 - 96
--------------------------	---------

## THIN BRICK SERIES

Sand Mold Brick .....	99
Belgian Brick .....	100
Special Used Brick .....	101 - 102
Sculptured Brick .....	103
Clinker Brick .....	104
Wirecut Brick .....	105 - 106
Sicilian Brick .....	107
Roman Brick .....	108
Weathered Brick .....	109
New England Brick .....	110
Adobe Brick .....	111 - 112

## TRIM & ACCESSORIES

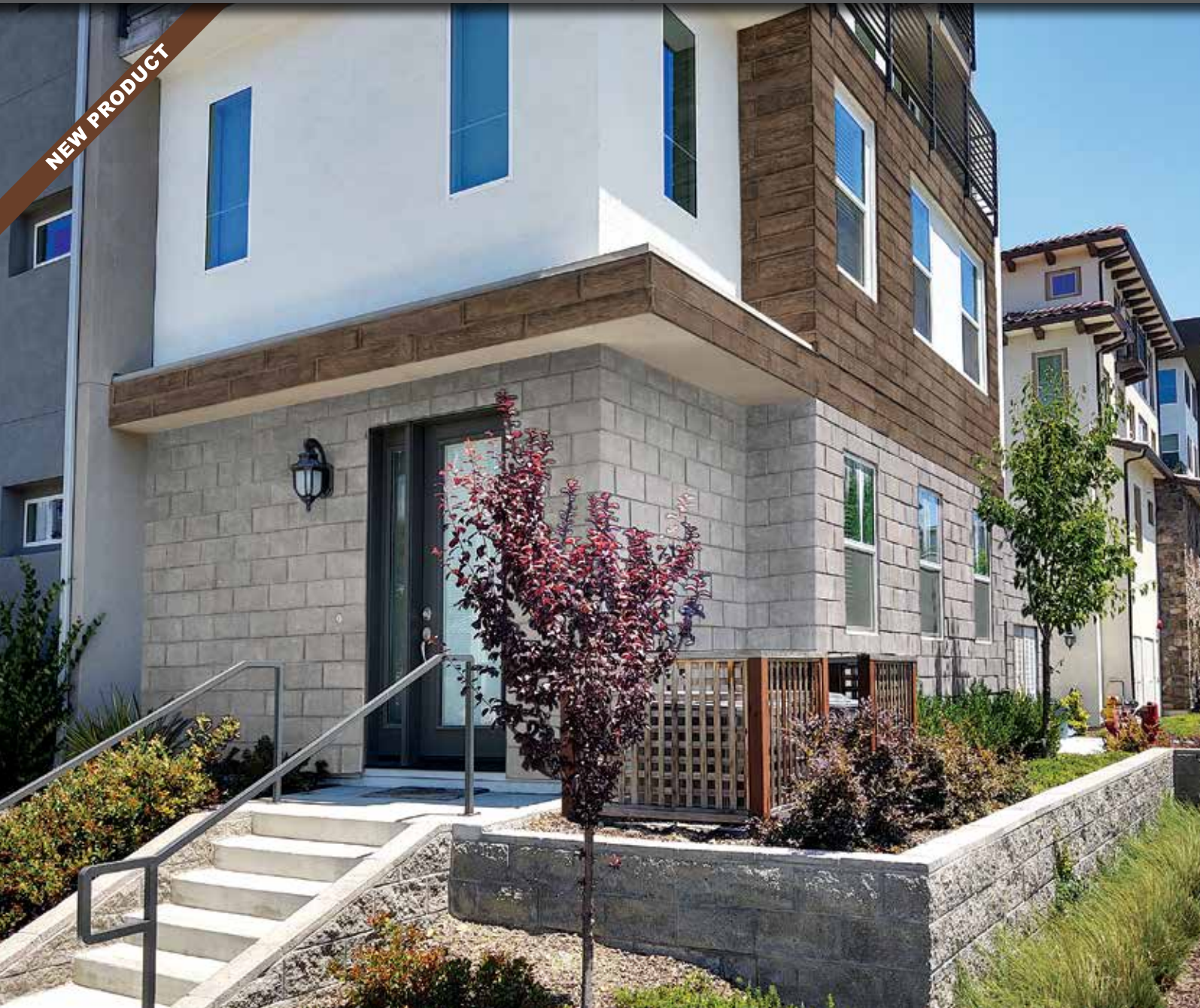
Sills, Lintels & Mantels .....	115
Window Stones, Trim Stones, Hearthstones & Boxes .....	116
Wall Caps & Post Caps .....	117
Brick Accessories .....	118
Grouting Options .....	119 - 120

## TECHNICAL DATA

Technical Data .....	123 - 124
Coronado Stone Sizes .....	125
Stone Color Index & Project Image Credits .....	126
Limited Warranty .....	127
Nationwide Manufacturing .....	128



NEW PRODUCT



Urbana Smooth - Silver Ash (Also Shown Refined WoodStone - Blackened Oak)

NEW PRODUCT



Urbana Split - Grey Granite



Urbana Smooth  
French White



Urbana Smooth  
Country Beige



Urbana Smooth  
Silver Ash



Urbana Split  
Grey Granite



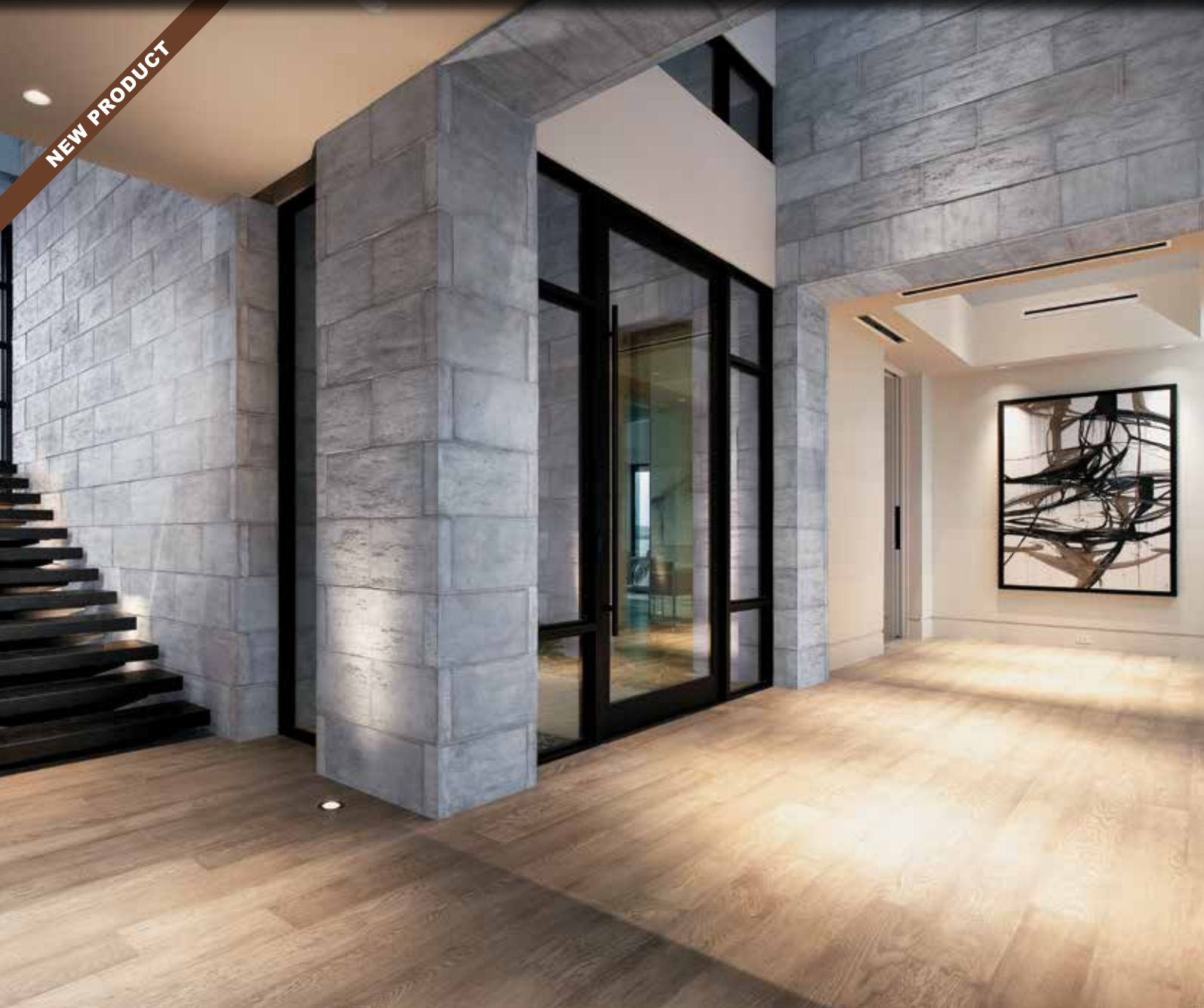
Urbana Split  
Smoke



Urbana Split  
French White



NEW PRODUCT



Sonora Sandstone - *Blue Heron*

NEW PRODUCT



Element Ledgestone - *Silver Ash*



Sonora Sandstone  
*French White*



Sonora Sandstone  
*Country Beige*



Sonora Sandstone  
*Blue Heron*



Element Ledgestone  
*Mount Vernon*



Element Ledgestone  
*Northland*



Element Ledgestone  
*White*





## *THE CLASSIC SERIES*

These alluring oversized tiles were created to mimic the elegant stone adorning some of the most stunning architectural wonders of the world. The exquisite textures included in this series range from finely detailed limestone to deeply eroded travertine. Each profile flows well with both Classical and Modern design styles.

French Limestone - *Silver Ash*





8" Classic Jerusalem - Sabara Beige



Smooth Limestone - Cream



8" Classic Jerusalem  
Silver Ash



8" Classic Jerusalem  
Sabara Beige



8" Classic Jerusalem  
Cayenne



Smooth Limestone  
Harvard Grey



Smooth Limestone  
Cream



Smooth Limestone  
White Sands





*French Limestone - Country Beige with 4" Chiseled Limestone Band*



*Chiseled Limestone - Cream*



*French Limestone  
French White*



*French Limestone  
Country Beige*



*French Limestone  
Silver Ash*



*Chiseled Limestone  
Sunriver Blend*



*Chiseled Limestone  
Silver Ash*



*Chiseled Limestone  
Cream*





Hill Country Limestone - *Bandera*



Colosseum Travertine - *Roman*



Hill Country Limestone  
*Cream*



Hill Country Limestone  
*Bandera*



Hill Country Limestone  
*Chalk*



Colosseum Travertine  
*Roman*

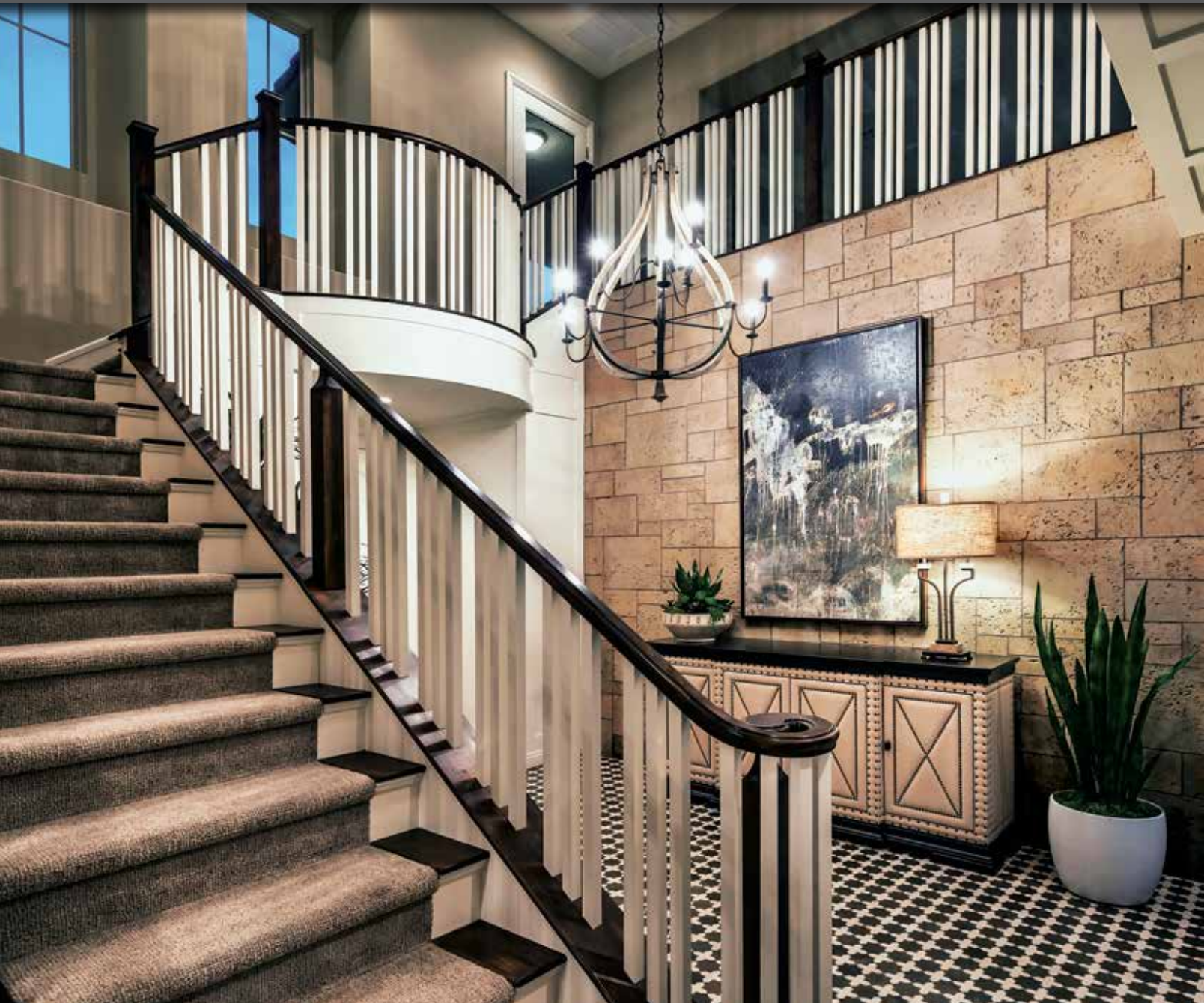


Colosseum Travertine  
*Mushroom*

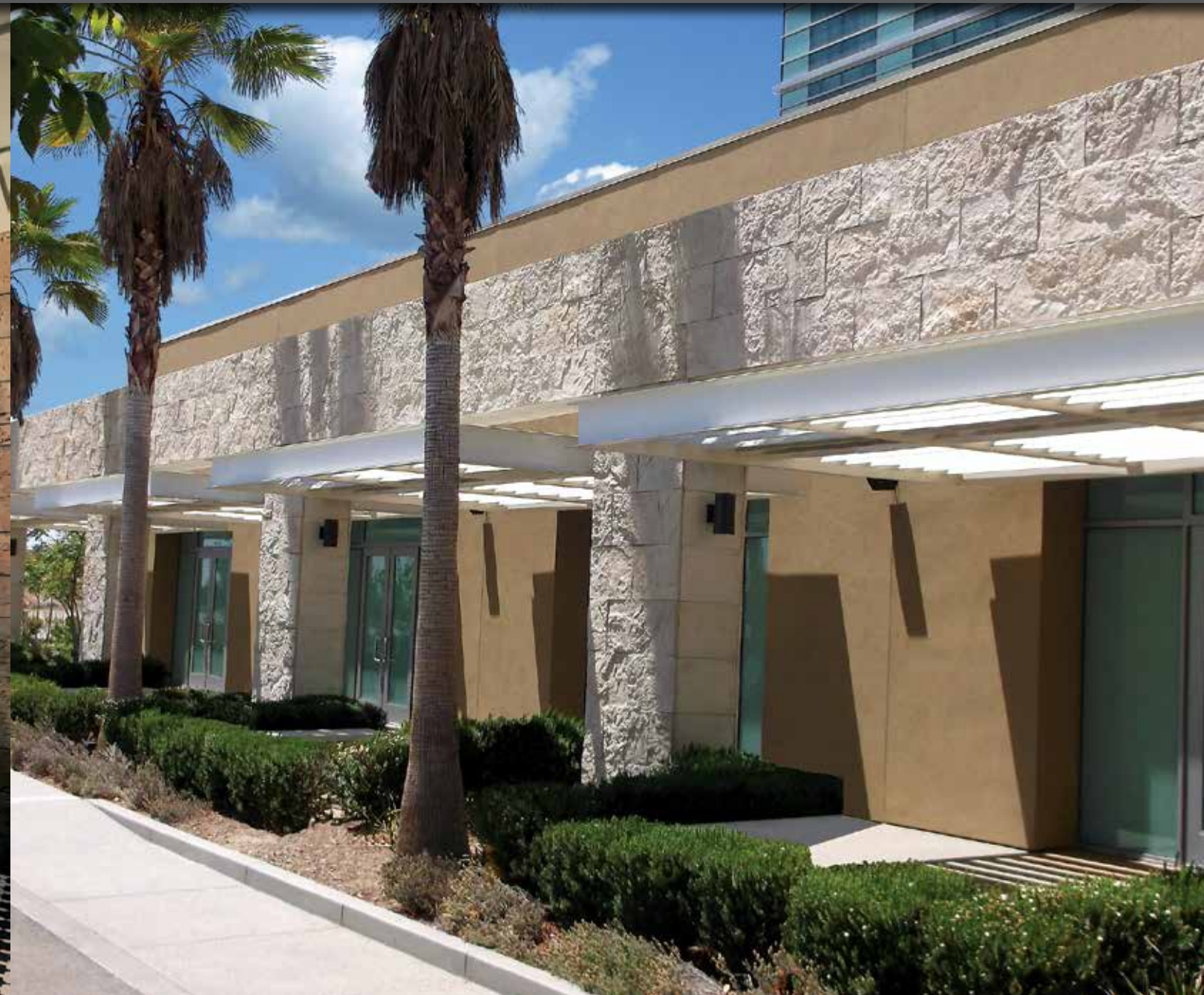


Colosseum Travertine  
*Black Forest*





Caribbean Coral - Santorini Blend (Ashlar Pattern)



The Getty Stone - Embassy Blend



Caribbean Coral  
Cream (Ashlar Pattern)



Aegean Coral  
Santorini Blend (Coursed Pattern)



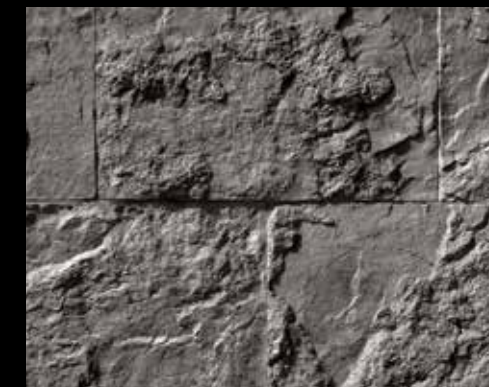
Aegean Coral  
Barbados (Coursed Pattern)



The Getty Stone  
Embassy Blend



The Getty Stone  
Silver Ash



The Getty Stone  
Black Forest





Sand Canyon Flagstone - *Desert Beige*



Chiseled Limestone - *Cream* with 4" Chiseled Limestone Band - *Silver Ash*



Sand Canyon Flagstone  
*Palomar Blend*



Sand Canyon Flagstone  
*Desert Beige*



Sand Canyon Flagstone  
*Cream*



Smooth Limestone - *Cream*  
6" Split Limestone - *Cream*

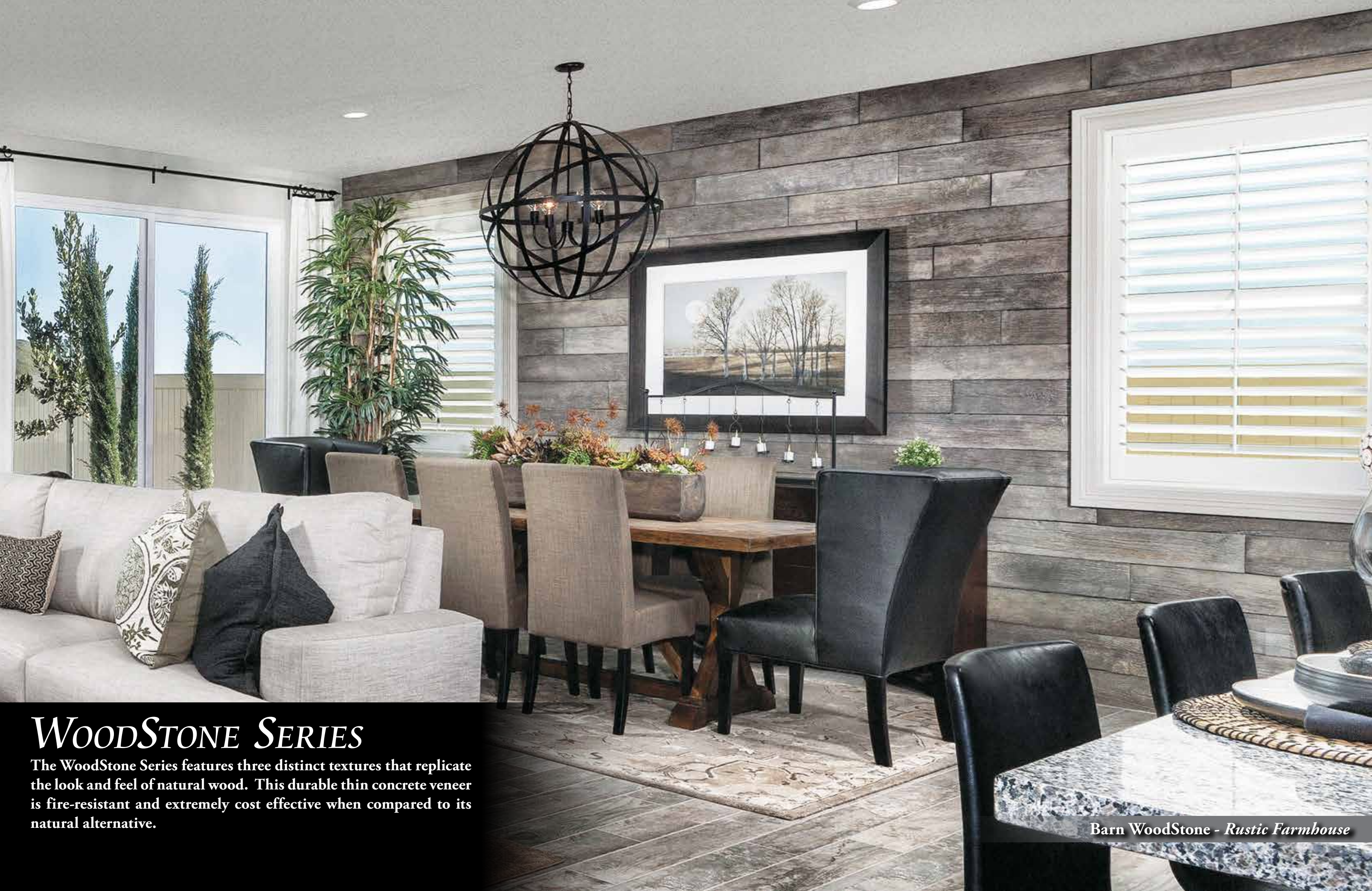


French Limestone - *Country Beige*  
6" Chiseled Limestone - *Cream*



Chiseled Limestone - *Cream*  
4" Chiseled Limestone - *Silver Ash*





## WOODSTONE SERIES

The WoodStone Series features three distinct textures that replicate the look and feel of natural wood. This durable thin concrete veneer is fire-resistant and extremely cost effective when compared to its natural alternative.

Barn WoodStone - Rustic Farmhouse

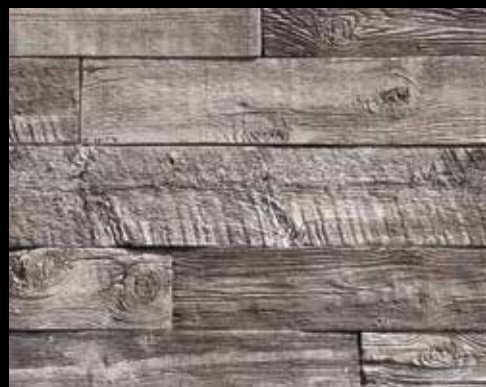




Barn WoodStone - *Cannery Blend*



Rough Cut WoodStone - *Deadwood*



Barn WoodStone  
*Rustic Farmhouse*



Barn WoodStone  
*Cannery Blend*



Barn WoodStone  
*Old Frontier*



Rough Cut WoodStone  
*Rustic Cedar*



Rough Cut WoodStone  
*Cedar*



Rough Cut WoodStone  
*Deadwood*





Refined WoodStone - *Blackened Oak*



Refined WoodStone - *Blackened Oak*



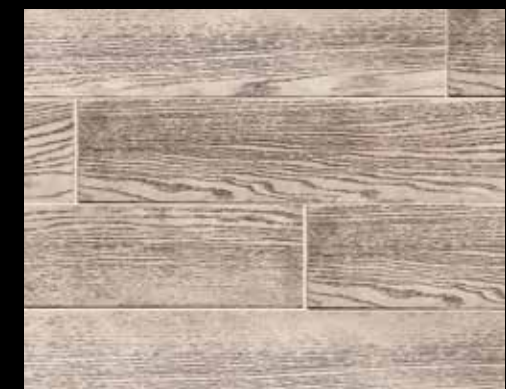
Refined WoodStone - *Antique White*



Refined WoodStone  
*Blackened Oak*



Refined WoodStone  
*Deadwood*



Refined WoodStone  
*Antique White*



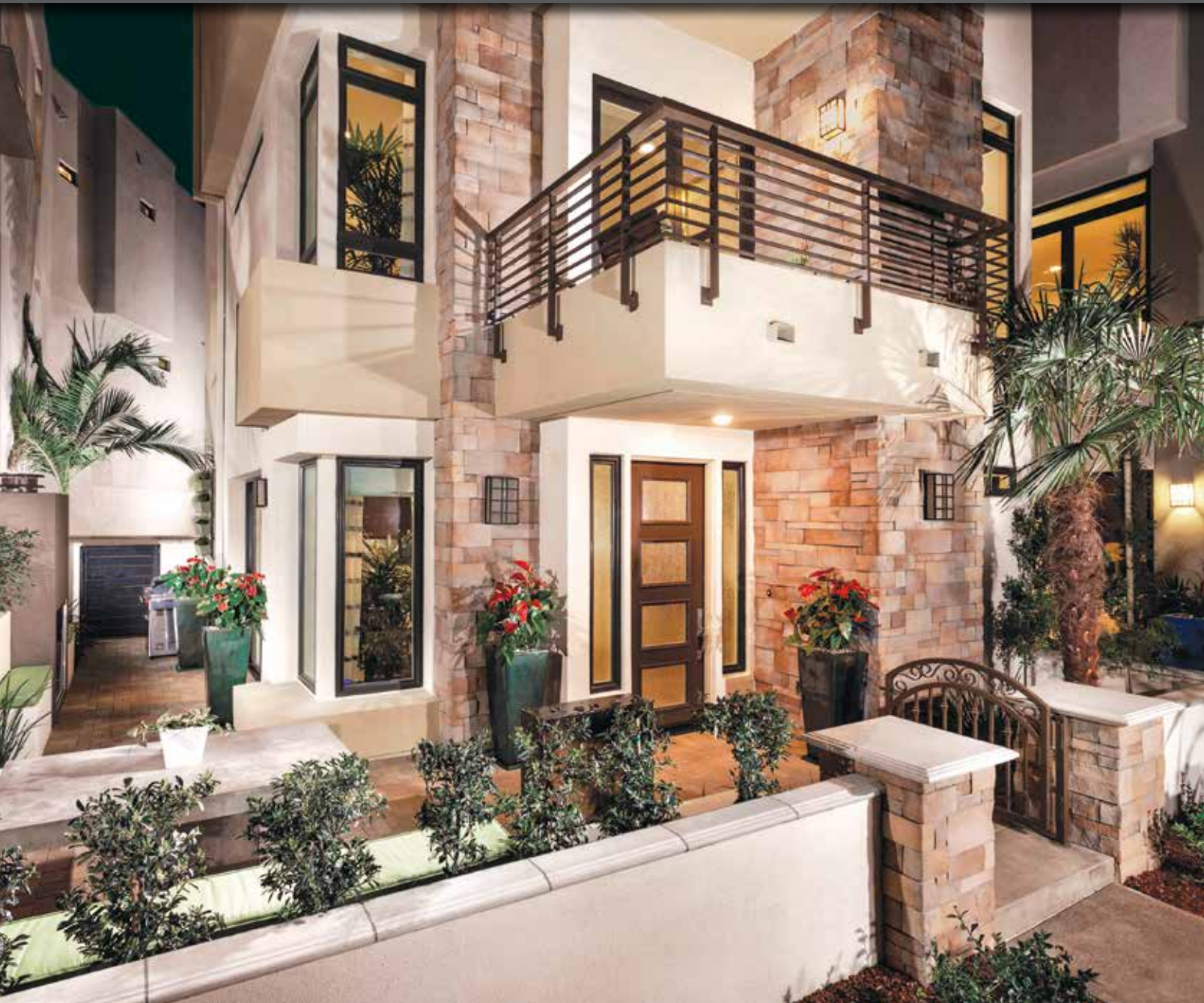


## *THE DESIGNER SERIES*

This unique series contains a variety of stylish modern profiles. These sleek, highly-textured veneers were created for the designer looking to add a touch of minimalistic style to their project. The continuous linear patterns compliment both modern and contemporary architectural designs.

Playa Vista Limestone - *Cream*





Playa Vista Limestone - *Alaskan Sunset (Ashlar Pattern)*



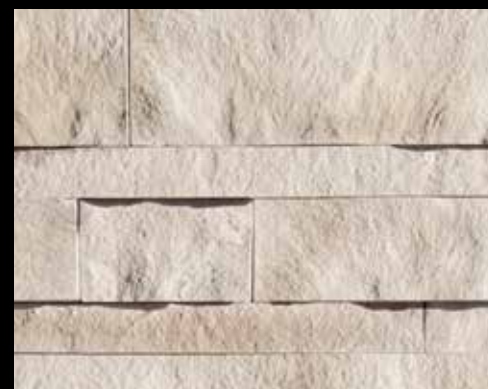
Amalfi Ledge - *Salerno*



Playa Vista Limestone  
*Walnut (Coursed Pattern)*



Playa Vista Limestone  
*Alaskan Sunset (Coursed Pattern)*



Playa Vista Limestone  
*Cream (Coursed Pattern)*



Amalfi Ledge  
*Winter Alps*



Amalfi Ledge  
*Pompeii*



Amalfi Ledge  
*Marianna*





3" Split Limestone  
*Vista Pointe*



3" Split Limestone  
*Cream*



3" Split Limestone  
*Black Forest*



3" Split Limestone  
*White*



3" Split Limestone - *Genoa Sands*



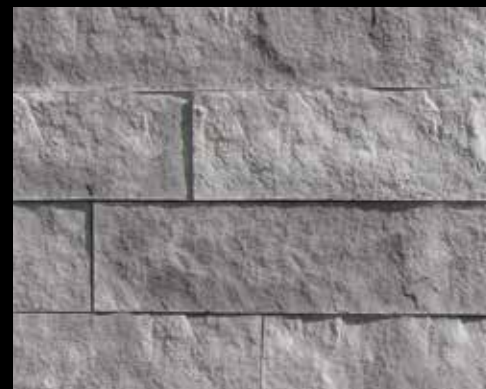
3" Split Limestone  
*Walnut*



3" Split Limestone  
*Grey*



6" Split Limestone - *Cream*



6" Split Limestone  
*Summit Grey*



6" Split Limestone  
*Cream*



6" Split Limestone  
*White*





Prairie Stone - Grey Granite



Industrial Ledge - Shale Grey



Prairie Stone  
Grey Granite



Prairie Stone  
Mocha Granite



Prairie Stone  
Smoke



Industrial Ledge  
Blackened Oak



Industrial Ledge  
Shale Grey



Industrial Ledge  
Oakbrook





## *CUT STONE SERIES*

The Cut Series features a variety of profiles that replicate the look of natural thin-cut veneer selected from quarries across North America. The gorgeous natural textures and rich color hues highlight the inherent beauty that make these stone veneer styles so desirable within the design community.

*Pavilion Stone - Pine Creek*





Canyon Cobble - Indian Springs



Osage - Fossil Bay



Canyon Cobble  
Wind River



Canyon Cobble  
Indian Springs



Canyon Cobble  
Palazzo



Osage  
Fossil Bay



Osage  
Cape Cod Grey



Osage  
Ancient Reef





## *VILLA STONE SERIES*

We searched up and down the Mediterranean coast to find the perfect blend of stone shapes and textures that embodied European old world architecture. Our Villa Stone profiles exemplify the unique characteristics of some of the most sought after types of stone adorning villas and chateaus across Europe.

French Country Villa® - Bordeaux





Venetian Villa® - Coastal Brown (Grouted)



Venetian Villa® - Madison County (Grouted)



Venetian Villa®  
Chalk (Dry Stacked)



Venetian Villa®  
Sunset Blend (Grouted)



Venetian Villa®  
Coastal Brown (Grouted)



Venetian Villa®  
Madison County (Grouted)



Venetian Villa®  
Grey (Grouted)



Venetian Villa®  
Palazzo (Dry Stacked)





Italian Villa® - Provo Canyon Grey



Italian Villa® - Volterra



Italian Villa®  
Provo Canyon Grey



Italian Villa®  
Verona



Italian Villa®  
Chablis



Italian Villa® - Volterra



Italian Villa®  
Dakota Brown



Italian Villa®  
Volterra



Italian Villa®  
Champagne





Tuscan Villa® - Florentine



Tuscan Villa® - Prairie Moss



Tuscan Villa®  
Dakota Brown



Tuscan Villa®  
Seville



Tuscan Villa®  
Florentine



Tuscan Villa®  
Coal



Tuscan Villa®  
Prairie Moss



Tuscan Villa®  
Romano





French Country Villa® - Volterra



French Country Villa® - Grey Quartzite



French Country Villa®  
Volterra



French Country Villa®  
Chablis



French Country Villa®  
Verona



French Country Villa®  
Bordeaux



French Country Villa®  
Champagne



French Country Villa®  
Grey Quartzite





## *LEDGESTONE SERIES*

We feature a vast selection of ledgestone profiles which replicate some of the most beautiful quarried ledgestones from around the country. Choose from a wide array of shapes, sizes and colors to compliment any architectural project, ranging from rustic to contemporary in style.

*Idaho Drystack - Smokey Grey*





Mountain Strip Stone - Brookside



Coronado Strip Stone - Fawn



Mountain Strip Stone Brookside



Mountain Strip Stone Chablis



Mountain Strip Stone Cape Cod Grey



Coronado Strip Stone Black Forest



Coronado Strip Stone White



Coronado Strip Stone Fawn





Pro-Ledge® - Black Forest



Pro-Ledge® - Brookside



Pro-Ledge®  
Oakbrook



Pro-Ledge®  
Huron



Pro-Ledge®  
Brookside



Pro-Ledge® - White



Pro-Ledge®  
Black Forest



Pro-Ledge®  
Alaskan Sunset



Pro-Ledge®  
White





Coronado Honey Ledge - Carmel Mountain



Coronado Honey Ledge - Shasta



Coronado Honey Ledge  
Shasta



Coronado Honey Ledge  
Grey Quartzite



Coronado Honey Ledge  
Huron



Coronado Honey Ledge  
Palomino



Coronado Honey Ledge  
Chablis



Coronado Honey Ledge  
Carmel Mountain



Coronado Honey Ledge  
Four Rivers



Coronado Honey Ledge  
Sioux Falls



Coronado Honey Ledge  
Rocky Mountain Rundle





Sawtooth Ledge - *Silver Ash*



Artisan Ledge - *Falmouth*



Sawtooth Ledge  
*Northland*



Sawtooth Ledge  
*Mount Vernon*



Sawtooth Ledge  
*Vista Pointe*



Artisan Ledge  
*Huron*



Artisan Ledge  
*Falmouth*



Artisan Ledge  
*Cathedral Grey*





Quick Stack® - *Cape Cod Grey*



Quick Stack® - *Carmel Mountain*



Quick Stack®  
*Antique Cream*



Quick Stack®  
*Cape Cod Grey*



Quick Stack®  
*Carmel Mountain*



Quick Stack® - *Cathedral Grey*



Quick Stack®  
*Cathedral Grey*



Quick Stack®  
*Coastal Brown*



Quick Stack®  
*Aspen*





Virginia Ledge - Cape Cod Grey



Sierra Ledge - Falmouth



Virginia Ledge  
Golden Sand



Virginia Ledge  
Cape Cod Grey



Virginia Ledge  
Hillside



Sierra Ledge  
Brookside



Sierra Ledge  
Falmouth



Sierra Ledge  
Cathedral Grey





Eastern Mountain Ledge® - *Dakota Brown*



Eastern Mountain Ledge® - *Carmel Mountain*



Eastern Mountain Ledge®  
*Grey Quartzite*



Eastern Mountain Ledge®  
*Provo Canyon Grey*



Eastern Mountain Ledge®  
*Carmel Mountain*



Eastern Mountain Ledge®  
*Chablis*



Eastern Mountain Ledge®  
*Madison County*



Eastern Mountain Ledge®  
*Vista Pointe*



Eastern Mountain Ledge®  
*Coastal Brown*



Eastern Mountain Ledge®  
*Palmetto Blend*



Eastern Mountain Ledge®  
*Huron*





Old World Ledge - Huron (Dry Stacked)



Old World Ledge - Birch Grove (Dry Stacked)



Old World Ledge  
Antique Cream (Dry Stacked)



Old World Ledge  
Vista Pointe (Dry Stacked)



Old World Ledge  
Grey Quartzite (Grouted)



Old World Ledge  
Etowah (Dry Stacked)



Old World Ledge  
Chablis (Dry Stacked)



Old World Ledge  
Huron (Dry Stacked)



Old World Ledge  
Monarch (Dry Stacked)



Old World Ledge  
Birch Grove (Dry Stacked)



Old World Ledge  
Brookside (Grouted)





Old Country Ledge - Banff (Dry Stacked)



Old Country Ledge - Carmel Mountain (Dry Stacked)



Old Country Ledge  
Monarch (Dry Stacked)



Old Country Ledge  
Cape Cod Grey (Dry Stacked)



Old Country Ledge  
Etowah (Dry Stacked)



Old Country Ledge  
Huron (Dry Stacked)



Old Country Ledge  
Greycliffe (Dry Stacked)



Old Country Ledge  
Banff (Dry Stacked)



Old Country Ledge  
Monticello (Dry Stacked)



Old Country Ledge  
Coastal Brown (Grouted)



Old Country Ledge  
Carmel Mountain (Grouted)





**Rocky Mountain Ledge  
Copper Canyon (Dry Stacked)**



**Rocky Mountain Ledge  
Meadow Springs (Dry Stacked)**



**Rocky Mountain Ledge  
Sandy Peaks (Dry Stacked)**



**Rocky Mountain Ledge - Copper Canyon (Dry Stacked)**



**Canyon Ledge - Dakota Brown (Grouted)**



**Rocky Mountain Ledge  
Bitterroot (Grouted)**



**Rocky Mountain Ledge  
Greycliffe (Dry Stacked)**



**Rocky Mountain Ledge  
Black Rundle (Dry Stacked)**



**Canyon Ledge  
Cape Cod Grey (Dry Stacked)**



**Canyon Ledge  
Dakota Brown (Dry Stacked)**



**Canyon Ledge  
Brookside (Dry Stacked)**





Idaho Drystack - *Antique Buff*



Idaho Drystack - *Carmel Mountain*



Idaho Drystack  
*Antique Buff*



Idaho Drystack  
*Grey Quartzite*



Idaho Drystack  
*Cape Cod Grey*



Idaho Drystack  
*Aspen*



Idaho Drystack  
*Smokey Grey*



Idaho Drystack  
*Carmel Mountain*





Weathered Edge - Coal Canyon



Weathered Edge - Sunhill Blend



Weathered Edge - Foxhill Blend



Weathered Edge  
Coal Canyon



Weathered Edge  
Sunhill Blend



Weathered Edge  
Foxhill Blend





## ASHLAR & RUBBLE SERIES

The skillfully handcrafted stones from this series can be traced back to times when artisan masons meticulously chiseled blocks of limestone to construct majestic structures. These magnificent stone profiles possess wonderfully sculpted textures and can be installed in an ashlar or coursed pattern.

*Carolina Rubble - Sandstone*





Country Rubble - Grey Quartzite (Dry Stacked)



Country Rubble - Aspen (Grouted)



Country Rubble  
Antique Cream (Dry Stacked)



Country Rubble  
Texas Cream (Grouted)



Country Rubble  
Aspen (Dry Stacked)



Country Rubble  
Coastal Brown (Dry Stacked)



Country Rubble  
Dakota Brown (Grouted)



Country Rubble  
Grey Quartzite (Grouted)





Texas Rubble - *Texas Cream*



Carolina Rubble - *Sandstone*



Texas Rubble  
*Antique Cream*



Texas Rubble  
*Texas Cream*



Texas Rubble  
*Cape Cod Grey*



Carolina Rubble  
*Sandstone*



Carolina Rubble  
*Gold Blend*

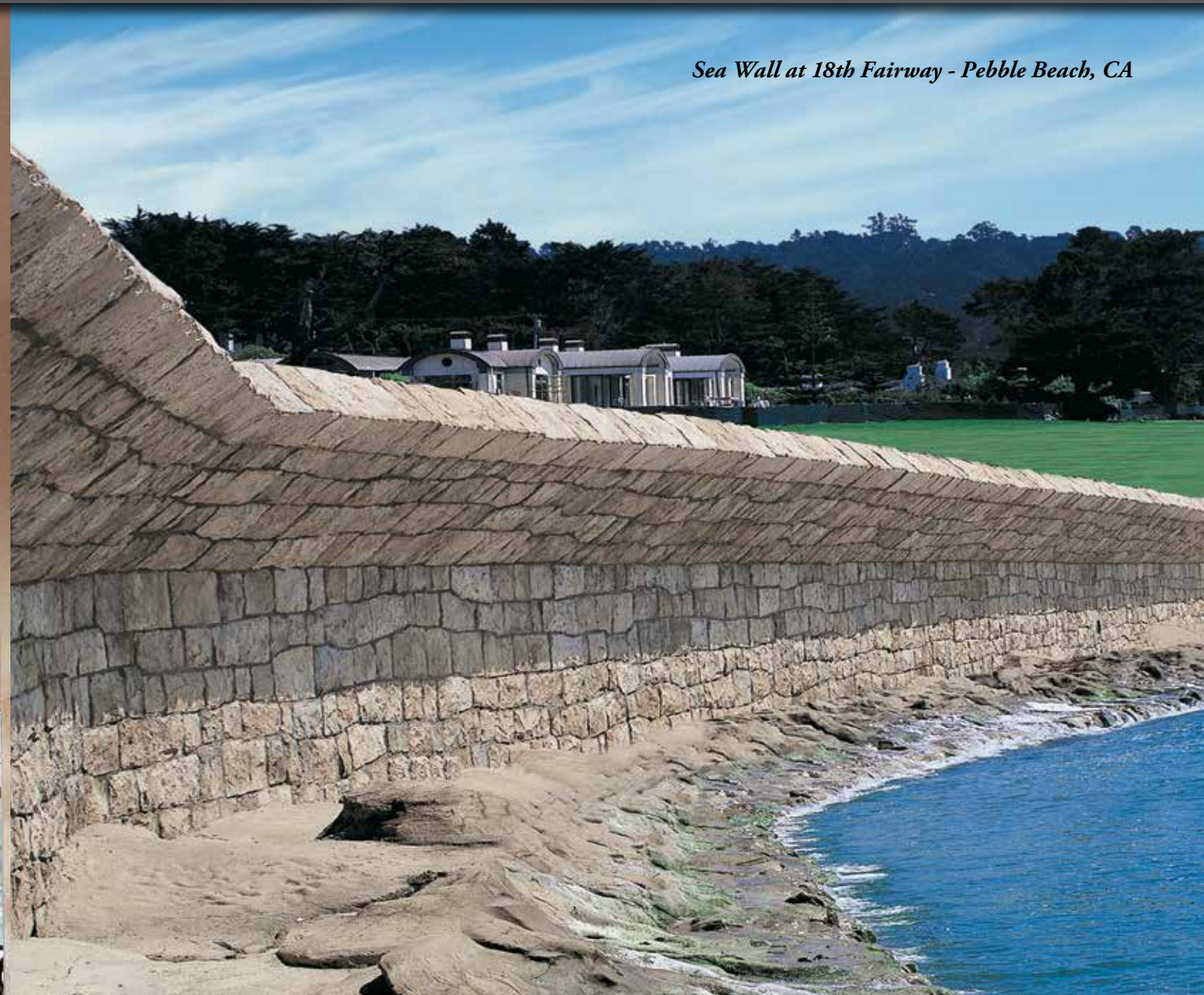


Carolina Rubble  
*Aspen*





English Rubble - *Dakota Brown*



Sea Wall at 18th Fairway - Pebble Beach, CA

English Rubble - *Pebble Beach Blend*



English Rubble  
*Black Hills*



English Rubble  
*Dakota Brown*



English Rubble  
*Newport Sandstone*





Santa Barbara - Sand Dune (Coursed Pattern)



Santa Barbara - Brookshire (Ashlar Pattern)



Santa Barbara  
English Grey (Ashlar Pattern)



Santa Barbara  
Sand Dune (Ashlar Pattern)



Santa Barbara  
Brookshire (Ashlar Pattern)





Country Castle - Sahara Beige (Grouted)



Belgian Castle - Chablis (Dry Stacked)



Country Castle  
Chalk (Grouted)



Country Castle  
Sahara Beige (Grouted)



Country Castle  
Antique Cream (Grouted)



Belgian Castle  
Bear Creek (Dry Stacked)



Belgian Castle  
Chablis (Grouted)



Belgian Castle  
Brookside (Dry Stacked)





## *IRREGULAR SHAPED STONE SERIES*

The irregular shaped stones shown in this series replicate a diverse group of fieldstones and river rocks that are native to the Eastern United States. These stones feature textures forged by millions of years of erosion, and a color palette of rich earthy hues that blend seamlessly with outdoor environments.

*Appalachian Fieldstone - Mountain Sunset*





Minnesota Fieldstone - *Dakota Brown*



Minnesota Fieldstone - *Coastal Brown*



Minnesota Fieldstone  
*Huron*



Minnesota Fieldstone  
*Carmel Mountain*



Minnesota Fieldstone  
*Dakota Brown*



Minnesota Fieldstone  
*Chablis*



Minnesota Fieldstone  
*Aspen*



Minnesota Fieldstone  
*Coastal Brown*





Appalachian Fieldstone - *Grey Quartzite*



Appalachian Fieldstone - *Mountain Sunset*



Appalachian Fieldstone  
*Grey Quartzite*



Appalachian Fieldstone  
*Madison County*



Appalachian Fieldstone  
*Mountain Sunset*





Split Fieldstone - *Carmel Mountain*



Viejo Ranch - *Viejo Blend*



Split Fieldstone  
*Lompoc*



Split Fieldstone  
*Carmel Mountain*



Split Fieldstone  
*Dakota Brown*





River Rock - Seaside



Creek Rock - Southwest Blend



River Rock  
Reno Blend



River Rock  
Sienna Brown



River Rock  
Desert Rust



Creek Rock  
Apache Brown



Creek Rock  
Calico Sand



Creek Rock  
Palm Springs Blend



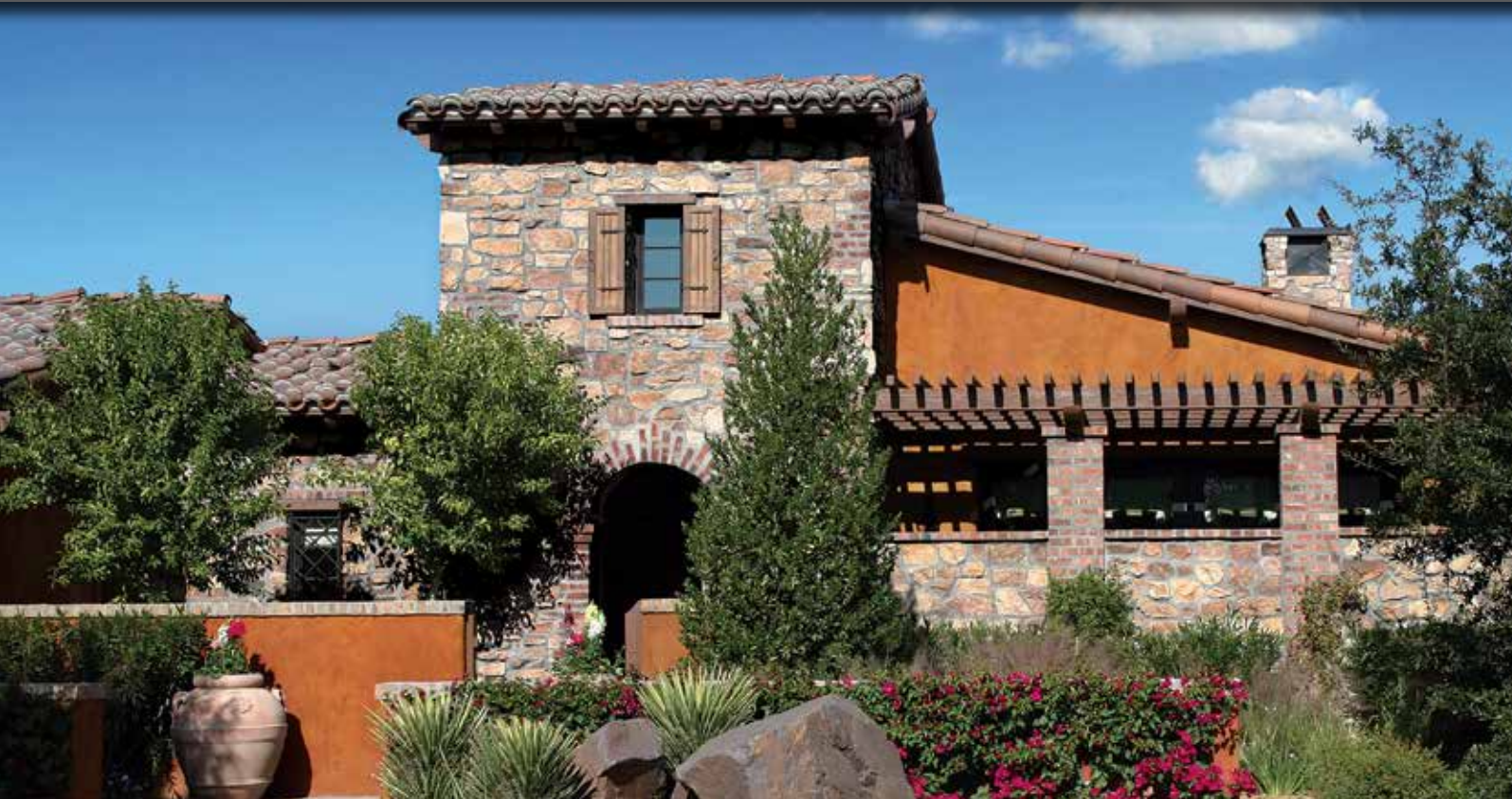


## STONE COMBINATIONS

Multiple stone veneer styles and colors can be combined to create a custom appearance. Varying the percentage of each profile allows designers to create drastically different looks, which enables further refinement of the style they are trying to achieve.

70% Eastern Mountain Ledge® - Coastal Brown  
30% Minnesota Fieldstone - Coastal Brown





50% Italian Villa - Verona  
50% Tuscan Villa - Florentine



70% Eastern Mountain Ledge - Carmel Mountain  
30% Minnesota Fieldstone - Carmel Mountain



(Left Side) Refined WoodStone - Blackened Oak  
(Right Side) 3" Split Limestone - Cream



70% Old World Ledge - Grey Quartzite  
30% Appalachian Fieldstone - Grey Quartzite





## *THIN BRICK SERIES*

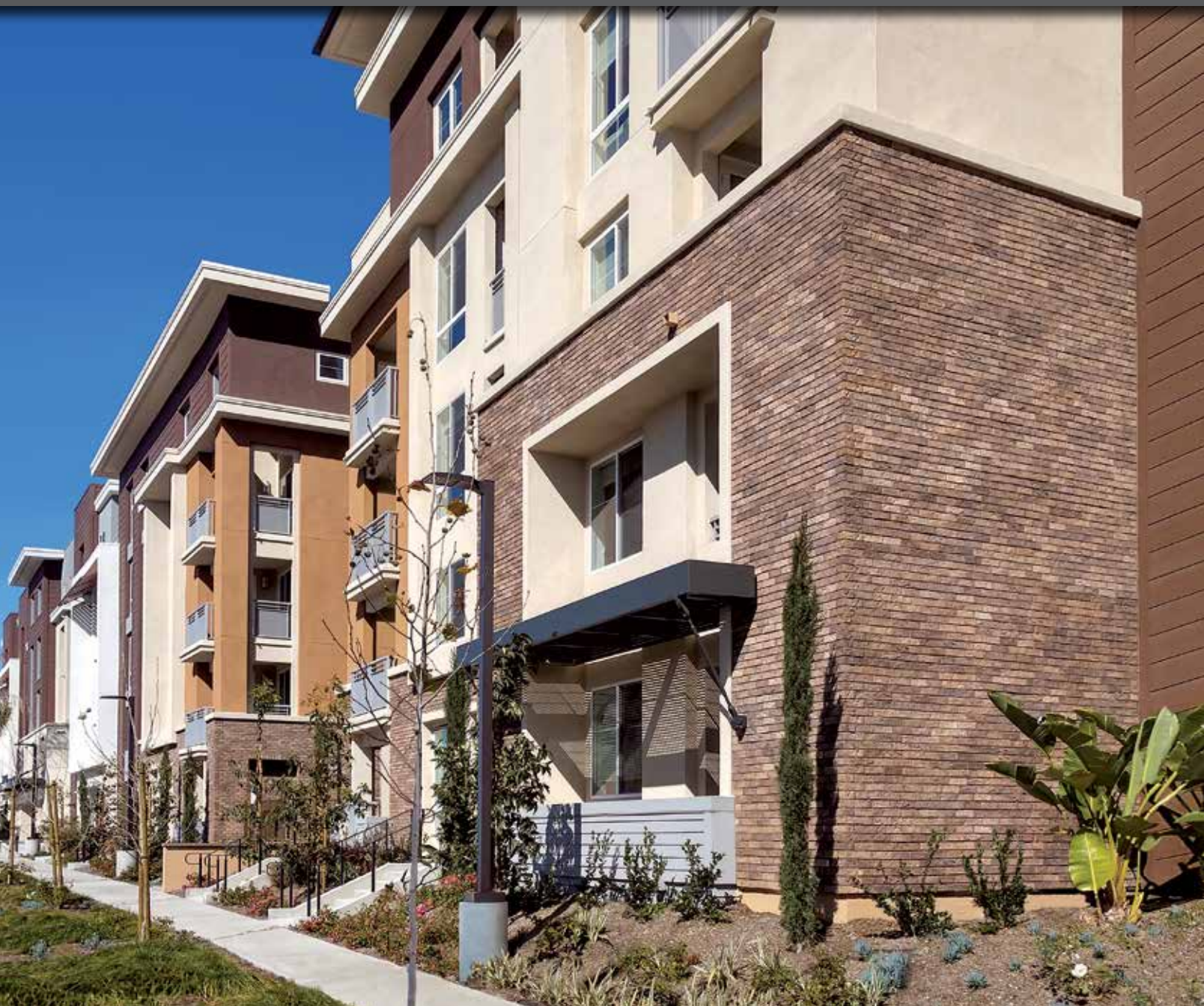
We offer a range of thin brick products that come in a wide variety of sizes, textures and colors. Projects can be enhanced with the alluring look and feel of full bed-depth brick without the need for additional wall tie support that standard brick installations require.

*Adobe Brick - Sienna with Mortar Wash*





2 3/4" x 8 3/4" Sand Mold Brick - *Savannah Grey*



2 1/2" x 8" Belgian Brick - *Brookside*



2 3/4" x 8 3/4" Sand Mold Brick  
*Old Colonial*



2 1/2" x 8 3/4" Sand Mold Brick  
*Savannah Grey*



2 3/4" x 8 3/4" Sand Mold Brick  
*Barnacle*



2 1/2" x 8" Belgian Brick  
*Bear Creek*



2 1/2" x 8" Belgian Brick  
*Eagle Buff*



2 1/2" x 8" Belgian Brick  
*Brookside*





2 1/2" x 8" Special Used Brick - *Eagle Buff*



2 1/2" x 8" Special Used Brick - *Rustic Blend*



2 1/2" x 8" Special Used Brick  
*Bear Creek*



2 1/2" x 8" Special Used Brick  
*Wolf Grey*



2 1/2" x 8" Special Used Brick  
*Eagle Buff*



2 1/2" x 8" Special Used Brick  
*White*



2 1/2" x 8" Special Used Brick  
*Rustic Blend*



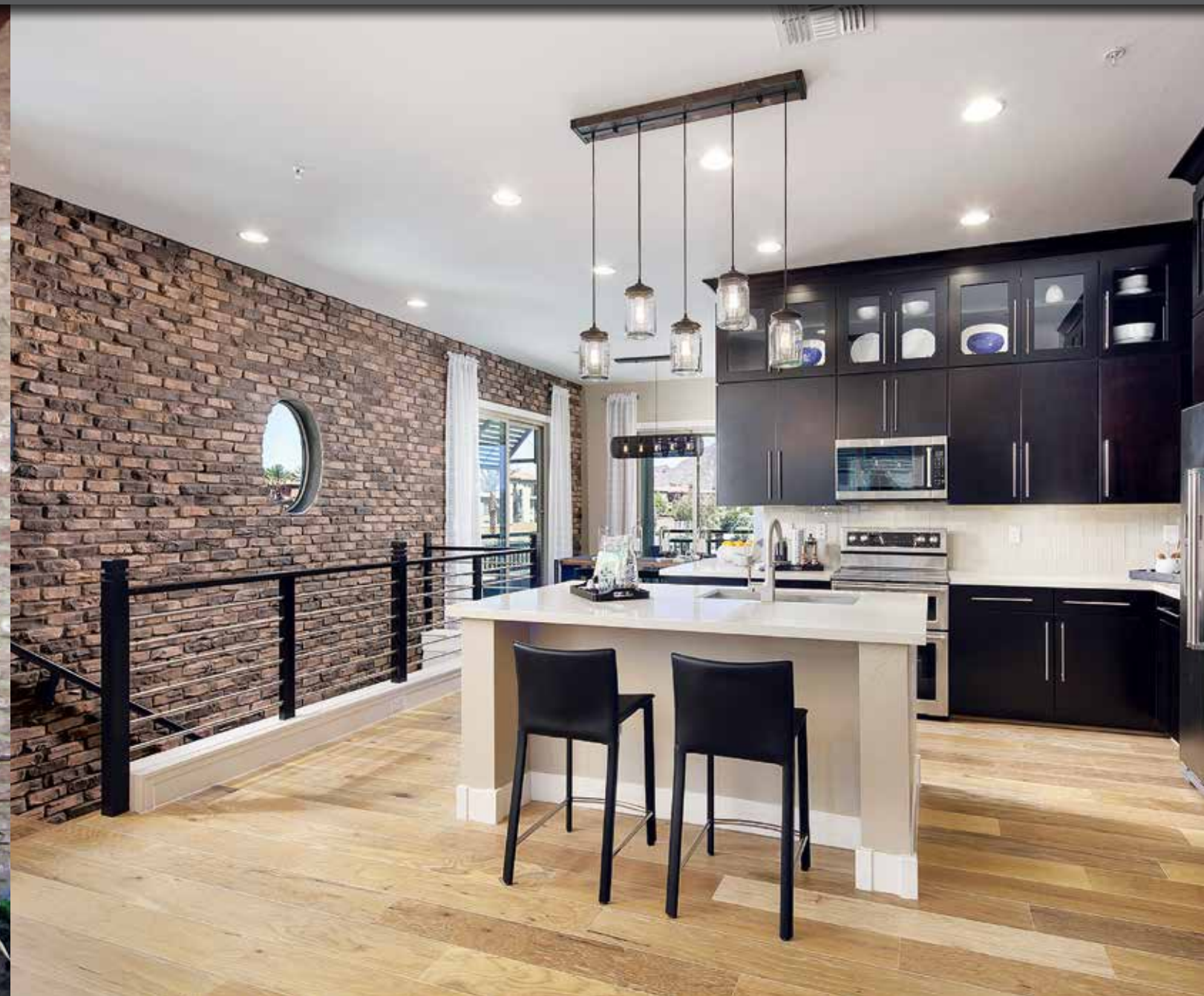
2 1/2" x 8" Special Used Brick  
*Glacier*

Square foot coverage is based on installation with a 1/2" mortar joint.  
Other colors may be available with an upcharge. All sizes are nominal.





2½" x 8" Sculptured Brick - *Eagle Buff*



2½" x 8" Clinker Brick - *Brown Blend*



2½" x 8" Sculptured Brick  
*Eagle Buff*



2½" x 8" Sculptured Brick  
*Aspen*



2½" x 8" Sculptured Brick  
*Wheat*



2½" x 8" Clinker Brick  
*Eagle Buff*



2½" x 8" Clinker Brick  
*Brown Blend*



2½" x 8" Clinker Brick  
*Antique Red*





2 1/2" x 8" Wirecut Brick - *Wolf Grey*



2 1/2" x 8" Wirecut Brick - *La Jolla Blend*



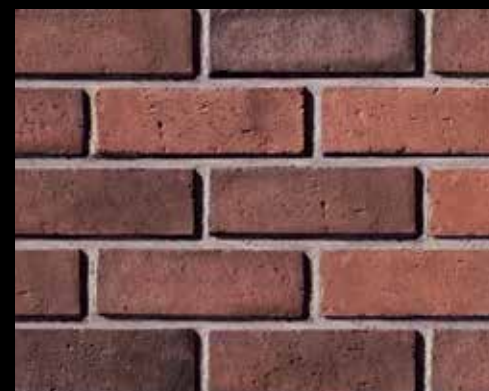
2 1/2" x 8" Wirecut Brick  
*Black Forest*



2 1/2" x 8" Wirecut Brick  
*Wolf Grey*



2 1/2" x 8" Wirecut Brick  
*Cottonwood*



2 1/2" x 8" Wirecut Brick  
*La Jolla Blend*



2 1/2" x 8" Wirecut Brick  
*Iceberg*



2 1/2" x 8" Wirecut Brick  
*Glacier*

Square foot coverage is based on installation with a 1/2" mortar joint.  
Other colors may be available with an upcharge. All sizes are nominal.





2 1/2" x 8" Sicilian Brick - Ferrara Blend



2 1/4" x 10" Roman Brick - Mezzano



2 1/2" x 8" Sicilian Brick  
Ferrara Blend



2 1/2" x 8" Sicilian Brick  
Marsala Blend



2 1/2" x 8" Sicilian Brick  
Monreale



2 1/4" x 10" Roman Brick  
Mezzano



2 1/4" x 10" Roman Brick  
Sorano



2 1/4" x 10" Roman Brick  
Ambrosia

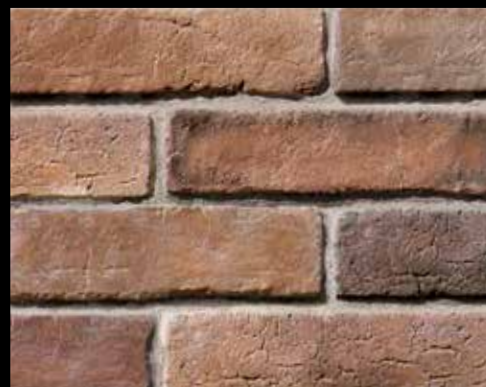




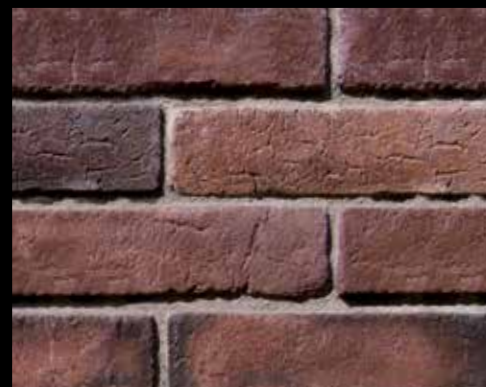
3" x 10" Weathered Brick - *Carmel Mountain*



3" x 10" New England Brick - *Charleston*



3" x 10" Weathered Brick  
*Carmel Mountain*



3" x 10" Weathered Brick  
*Antique Red*



3" x 10" Weathered Brick  
*San Vincenzo*



3" x 10" New England Brick  
*Charleston*



3" x 10" New England Brick  
*Dakota Brown*



3" x 10" New England Brick  
*Bear Creek*





4" x 16" Adobe Brick - Haystack



4" x 16" Adobe Brick - Sienna with Mortar Wash



4" x 16" Adobe Brick  
Haystack



4" x 16" Adobe Brick  
Saltillo



4" x 16" Adobe Brick  
Sienna

Square foot coverage is based on installation with a 1/2" mortar joint. Other colors may be available with an upcharge. All sizes are nominal.





## TRIM & ACCESSORIES

Coronado Stone offers one of the largest architectural stone accessory product lines in the industry. These meticulously handcrafted accents will add the extra finishing touches to your amazing project.

Flagstone Wall Cap - *Lompoc*  
Italian Villa® - *Dakota Brown*



SILLS



Chiseled Stone Sill - Light Grey



Bella Terra Sill - Roman

LINTELS



Chiseled Stone Lintel - Gulf Sands (Above)  
Split Stone Sill - Gulf Sands (Below)



MANTELS



Chiseled Stone Mantel - Buff

WINDOW STONES AND KEYSTONE



Chiseled Window Stone (Brownstone)  
Thickness: 2"



Chiseled Keystone (Brownstone)  
Thickness: 3"



Architectural Trim Stone (Brownstone)  
Thickness: 1 1/2"

HEARTHSTONES



BOXES



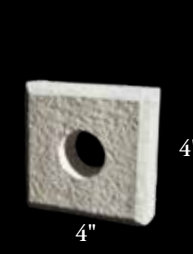
Light Box  
Opening: 4"  
(Brownstone)



Light Box  
Opening: 4"  
(Buff)



Electrical Box  
Opening: 2 1/2" x 4 1/2"  
(Gulf Sands)



Doorbell / Hose Bib  
Opening: 1 1/2"  
(Lompoc)



WALL & POST CAPS



Flagstone Wall Cap - Brownstone



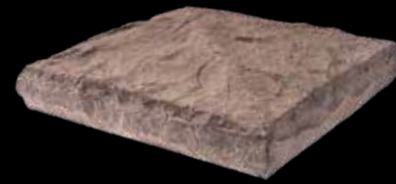
Chiseled Stone Post Cap - Lompoc



Flagstone Post Cap  
(Lompoc)  
20" x 20", 28" x 28", 30" x 30"  
Edge Thickness: 3 1/2"



Flagstone Wall Cap  
(Light Grey)  
9" x 18", 12" x 24", 14" x 24", 18" x 24"  
Edge Thickness: 2 1/2"



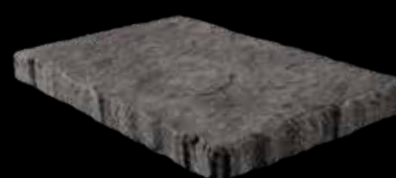
Chiseled Stone Post Cap  
(Brownstone)  
16" x 16", 18" x 18", 20" x 26", 21" x 21"  
24" x 24", 28" x 28", 30" x 30", 32" x 32"  
36" x 36", 38" x 38", 42" x 42"  
Edge Thickness: 3 1/2"  
Peak Height: Varies Depending on Size



Chiseled Stone Wall Cap  
(Cream)  
8" x 24", 10" x 18", 12" x 18"  
14" x 18", 16" x 24", 18" x 24"  
Edge Thickness: 2"  
Peak Height: 3 1/2"



Snapped Edge Post Cap  
(Buff)  
24" x 24"  
Edge Thickness: 1 3/4"



Snapped Edge Wall Cap  
(Charcoal)  
12" x 24", 14" x 24"  
Edge Thickness: 1 3/4"

BRICK ACCESSORIES



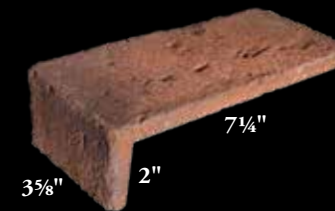
Brick Molding - Antique Red



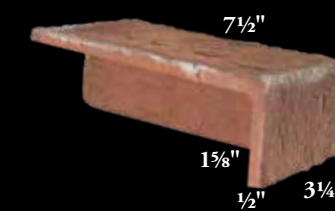
Brick Corner - Rustic Blend



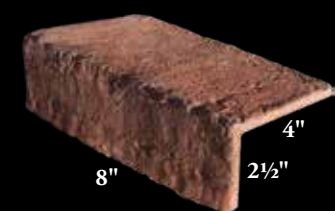
2 1/2" x 8" Corner  
(Rustic Blend)



4" x 8" Corner  
(Rustic Blend)



3-Sided Corner  
(Rustic Blend)  
Left and Right Corners Available



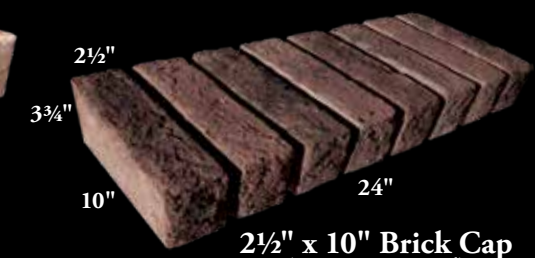
Long Return Corner  
(Rustic Blend)



Brick Sill  
(Rustic Blend)



2 1/2" Brick Molding  
(Rustic Blend)



2 1/2" x 10" Brick Cap  
(Antique Red)

Items do not come grouted.





3/4" Full Brushed (White Grout)  
French Country Villa® - Bordeaux



3/4" Full Brushed (Matching Grout)  
French Country Villa® - Bordeaux



1/2" - 3/4" Deep Raked  
Mountain Villa® - Rustic Valley



Full Brushed - White Grout



Shallow Brushed - Grey Grout



3/4" Full Clean Smooth Brushed  
Euro Villa® - Timberlake



1" Full Rough Brushed  
Euro Villa® - Timberlake



3/4" Full Brushed  
Tuscan Villa® - Prairie Moss



1" - 1 1/2" Full Smooth Tooled  
Mountain Villa® - Rustic Valley



3/4" Shallow Brushed  
Mountain Villa® - Grey Quartzite



1" - 1 1/2" Full Brushed  
Mountain Villa® - Grey Quartzite



3/4" Deep Raked (Matching Grout)  
Italian Villa® - Portabella



1" Full Brushed (White Grout)  
Italian Villa® - Portabella



3/4" Weeping  
Tuscan Villa® - Prairie Moss





## TECHNICAL DATA

Coronado Stone supports the specification and design process with architectural binders, hatch patterns, tileable textures and a variety of other helpful specification tools, all of which are available in hardcopy or can be downloaded from our website.

Prairie Stone - Grey Granite



## TECHNICAL DATA

Coronado Stone is manufactured to meet or exceed specifications for all major code approvals. Independent testing confirms compliance with ICC-ES AC51 for Precast Stone Veneer. Always check your local building codes before installing stone.


**Weight:** The average packaged weight of Coronado Stone veneer is 8 to 12 lbs. per square foot. Weight varies with thickness.

**Non-combustible:** Testing on Coronado Stone showed zero flame spread and zero smoke development.

**Integral Colors:** Coronado's production process results in a product which maintains a natural stone appearance even after many years of exposure to the elements.

**Approvals:** Coronado Stone has been tested by independent laboratories and has been approved for its intended use by:

 **ICC The International Conference of Building Officials. Report ESR-2598**

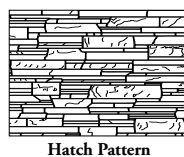
 **Texas Department of Insurance Product Approval Code. Evaluation ID EC-101**

 **Florida Department of Business & Professional Regulation Approval Code. Evaluation FL31373**

## TECHNICAL DOWNLOADS

Visit [www.CORONADO.com](http://www.CORONADO.com) to download an extensive collection of technical data and specification sheets. Click on the **(RESOURCES)** link in the top menu bar to view the following items:

- Installation Specification Sheets
- Technical Data
- Cross-Section Details
- Hatch Patterns
- Stone Tileable Textures



## TESTING

### Materials:

- Cement ASTM C150
- Sand ASTM C144 or C33
- Aggregate ASTM C33 or C330

### Testing:

- Shear Bond Test Tested in accordance with ASTM C482 Greater than 50 psi
- Water Absorption Tested in accordance with section 3.1.4 & 4.6 of ICC-ES AC51
- Freeze / Thaw Tested in accordance with ASTM C67 Less than 3% mass loss
- Unit Weight Shipping weight is less than 15 lbs. per sq. ft. Density is determined in accordance with ASTM C567
- Compressive Strength Tested in accordance with ASTM C39 Greater than 1800 psi
- Tensile Strength Tested in accordance with ASTM C190
- Flexural Strength Tested in accordance with ASTM C348

## INSTALLATION GUIDES

- Standard Stone Installation Guide (Available in English and Spanish)
  - WoodStone Installation Guide
  - Classic Series Installation Guide (Available in English and Spanish)
  - Industrial Ledge Installation Guide
  - The Wave Installation Guide
  - Lennox Stone Installation Guide
  - Coronado Stone Additional Tech Notes
- [www.CORONADO.com/InstallationGuides](http://www.CORONADO.com/InstallationGuides)

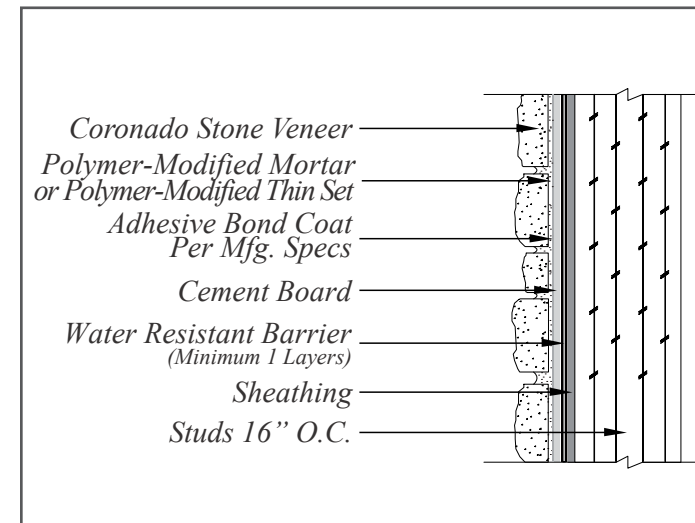
### ⚠ PROP 65 WARNING

Our cement stone veneer products contain Silica, crystalline (airborne particles of respirable size), which is known to the State of California to cause cancer.

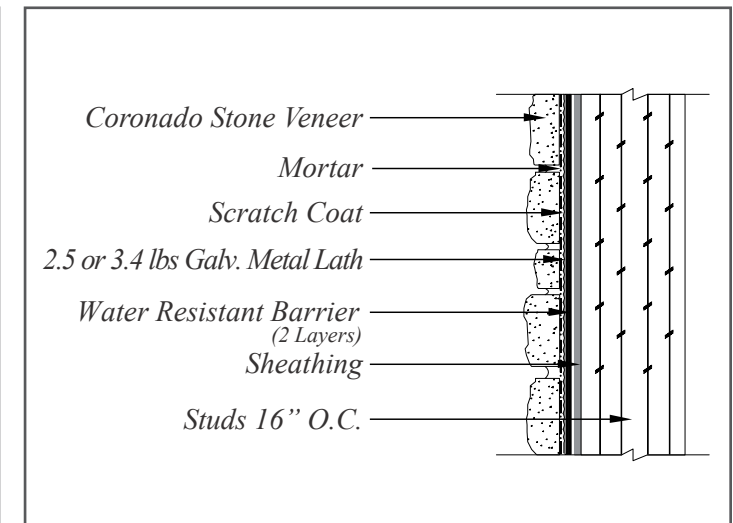
A properly fitted NIOSH approved particulate filtering facepiece should be used during dust generating processes, including cutting, sawing, and/or drilling.

For more information go to [www.P65Warnings.ca.gov](http://www.P65Warnings.ca.gov).

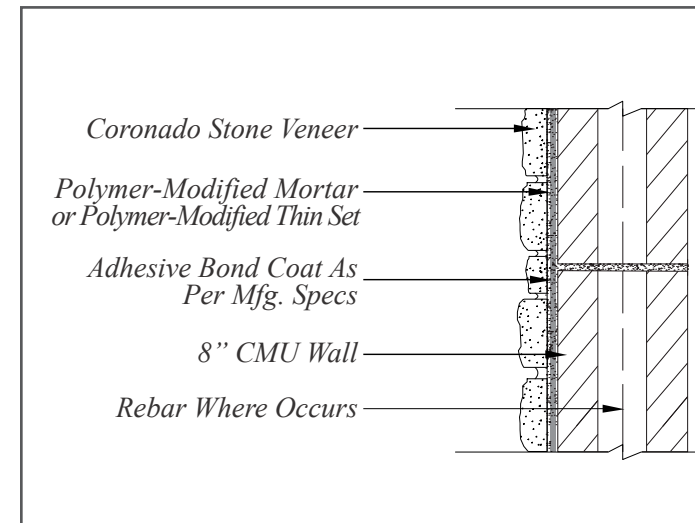
## WOOD FRAME WITH CEMENT BOARD



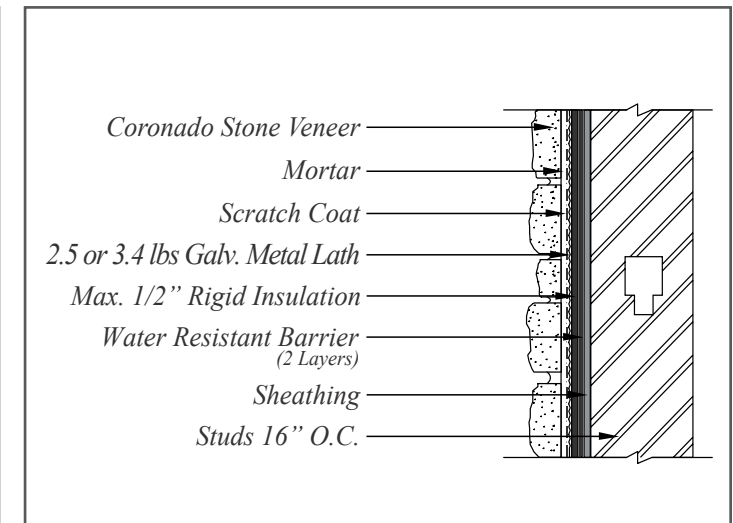
## WOOD FRAME WITH SHEATHING



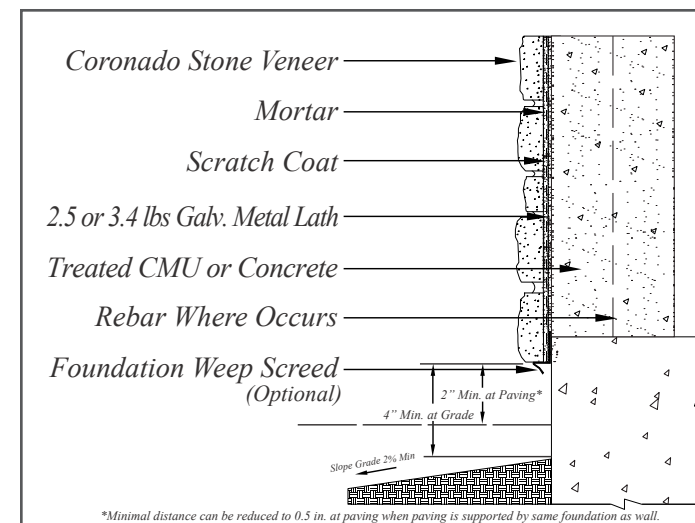
## UNTREATED / UNPAINTED CLEAN CMU



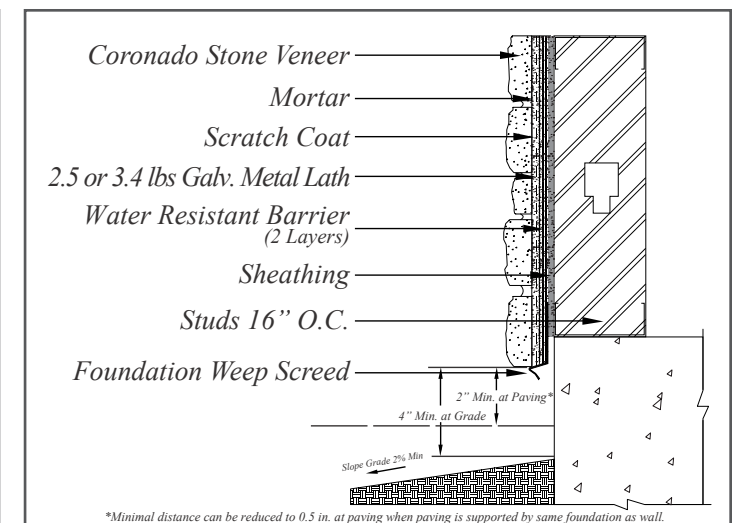
## STEEL FRAME WITH RIGID INSULATION



## TREATED / PAINTED CONCRETE



## STEEL FRAME WITH SHEATHING



\*Minimal distance can be reduced to 0.5 in. at paving when paving is supported by same foundation as wall.

\*Minimal distance can be reduced to 0.5 in. at paving when paving is supported by same foundation as wall.

For Additional Details Please Visit - <https://www.coronado.com/TechnicalDrawings>  
 Drawings Not To Scale



Profile	Height	Length	Thickness	Weight
3" Split Limestone	3"	up to 18"	1" - 1 3/4"	7 - 10 lbs.
6" Split Limestone	6"	up to 30"	3/4" - 1 1/4"	7 - 10 lbs.
8" Classic Jerusalem	8"	8" - 24"	1"	7 - 10 lbs.
Adobe Brick	3 1/2" (±1/8")	15 1/4" (±1/4")	1"	4 - 6 lbs.
Aegean Coral	16"	24"	1"	7 - 10 lbs.
Amalfi Ledge	2" and 6"*	24"	1" - 1 1/2"	7 - 10 lbs.
Appalachian Fieldstone	7" - 9"	7" - 9"	1 1/2" - 2 1/2"	7 - 10 lbs.
Artisan Ledge	4"*	up to 20"	1" - 1 1/2"	7 - 10 lbs.
Barn WoodStone	4", 6" and 8"	36"	1"	7 - 10 lbs.
Belgian Brick	2 1/2" (±1/16")	7 3/4" (±1/8")	5/8" (±1/16")	4 - 6 lbs.
Belgian Castle	2" - 12"	up to 16"	1"	7 - 10 lbs.
Canyon Cobble	2" - 10"	4" - 24"	1" - 1 3/4"	7 - 10 lbs.
Canyon Ledge	1" - 7"	up to 20"	1 1/2" - 3"	7 - 10 lbs.
Caribbean Coral	4" - 12"	4" - 16"	1"	7 - 10 lbs.
Carolina Rubble	2" - 10"	4" - 16"	1 1/4" - 2 1/4"	7 - 10 lbs.
Chiseled Limestone	12"	24"	1"	7 - 10 lbs.
Clinker Brick	2 1/2" Average	4" or 8"	5/8" - 2"	4 - 6 lbs.
Colosseum Travertine	16"	24"	1"	7 - 10 lbs.
Coronado Honey Ledge	2" and 4"*	up to 20"	1" - 2"	7 - 10 lbs.
Coronado Strip Stone	1 1/2" - 2"	up to 23"	1 1/4" to 2"	7 - 10 lbs.
Country Castle	1 1/2" - 7 1/2"	4" - 20"	1 1/2"	7 - 10 lbs.
Country Rubble	2" - 8"	up to 23"	1" - 2 1/2"	7 - 10 lbs.
Creek Rock	3" - 10"	3" - 10"	3/4" - 2 1/2"	7 - 10 lbs.
Eastern Mountain Ledge®	1" - 5"*	up to 22"	1" - 3"	7 - 10 lbs.
Element LedgeStone	2" and 4"*	up to 20"	3/4" - 2"	7 - 10 lbs.
English Rubble	6" - 14"	8" - 32"	1 1/4" - 2"	9 - 12 lbs.
French Country Villa®	2" - 7"	up to 18"	1 1/2" - 2"	7 - 10 lbs.
French Limestone	12"	24"	1"	7 - 10 lbs.
The Getty Stone	16"	24"	1" - 1 3/4"	9 - 12 lbs.
Hill Country Limestone	12"	24"	1"	7 - 10 lbs.
Idaho Drystack	1" - 4"	4" - 16"	1 1/4" - 2"	7 - 10 lbs.
Industrial Ledge	2", 3", 4", 5" & 7"	4" - 30"	3/4" - 2"	7 - 10 lbs.
Italian Villa®	2" - 8"	up to 16"	1 1/2" - 2 3/4"	7 - 10 lbs.
Minnesota Fieldstone	6" - 12"	6" - 12"	1 1/2" - 2 1/2"	7 - 10 lbs.
Montana Ledge	1" - 4"*	up to 20"	1" - 2 1/2"	7 - 10 lbs.
Mountain Strip Stone	1 1/2" and 3"	up to 23"	1 1/4" to 2"	7 - 10 lbs.
New England Brick	2 5/8" (±1/16")	9 1/2" (±1/8")	5/8" (±1/16")	4 - 6 lbs.

Profile	Height	Length	Thickness	Weight
Old Country Ledge	2" - 7"	4" - 20"	1" - 1 3/4"	7 - 10 lbs.
Old World Ledge	1" - 5"	4" - 16"	1" - 1 1/2"	7 - 10 lbs.
Osage	3" - 12"	4" - 28"	1" - 1 1/2"	7 - 10 lbs.
Pavilion Stone	4" - 12"	4" - 20"	1/2" - 1"	7 - 10 lbs.
Playa Vista Limestone	2 1/2", 5" and 7 3/4"	up to 24"	1" - 1 1/2"	7 - 10 lbs.
Prairie Stone	1 3/4" and 3 5/8"	up to 24"	1 1/8"	7 - 10 lbs.
Pro-Ledge®	4"*	up to 20"	1" - 1 1/2"	7 - 10 lbs.
Quick Stack®	2" or 4"*	up to 20"	1" - 2"	7 - 10 lbs.
Refined WoodStone	6"	36"	1"	7 - 10 lbs.
River Rock	2" - 10"	2" - 10"	3/4" - 2 1/2"	7 - 10 lbs.
Rocky Mountain Ledge	1" - 7"	up to 24"	1" - 2 1/2"	7 - 10 lbs.
Roman Brick	2 1/4" (±1/8")	10" (±1/8")	5/8" (±1/16")	4 - 6 lbs.
Rough Cut WoodStone	6"	36"	1"	7 - 10 lbs.
Sand Canyon Flagstone	16"	30"	1"	9 - 12 lbs.
Sand Mold Brick	2 3/4" (±1/8")	8 3/4" (±1/4")	5/8" (±1/16")	4 - 6 lbs.
Santa Barbara	4" - 14"	8" - 32"	1 1/4" - 2"	9 - 12 lbs.
Sawtooth Ledge	3" and 6"	up to 20"	1"	7 - 10 lbs.
Sculptured Brick	2 1/2" (±1/8")	7 5/8" (±1/4")	5/8" - 1"	4 - 6 lbs.
Sicilian Brick	2 1/2" (±1/8")	7 3/4" (±1/8")	5/8" (±1/16")	4 - 6 lbs.
Sierra Ledge	4"*	up to 20"	1 1/2" - 2"	7 - 10 lbs.
Smooth Limestone	12"	24"	1"	7 - 10 lbs.
Sonora Sandstone	12"	28"	1"	7 - 10 lbs.
Special Used Brick	2 1/2" (±1/8")	7 3/4" (±1/4")	5/8" (±1/16")	4 - 6 lbs.
Split Fieldstone	6" - 20"	6" - 20"	1" - 2"	7 - 10 lbs.
Texas Rubble	2" - 8"	up to 23"	1" - 2 1/2"	7 - 10 lbs.
Tuscan Villa®	2" - 12"	4" - 16"	1" - 1 3/4"	7 - 10 lbs.
Urbana Smooth	7 1/2"	15 1/2"	1"	7 - 10 lbs.
Urbana Split	8"	16"	1"	7 - 10 lbs.
Venetian Villa®	2" - 14"	4" - 32"	1" - 2 1/2"	7 - 10 lbs.
Viejo Ranch	2" - 18"	up to 30"	2" - 3"	9 - 12 lbs.
Virginia Ledge	2" or 4"*	up to 20"	1" - 3"	7 - 10 lbs.
Weathered Brick	2 5/8" (±1/8")	9 7/8" (±1/8")	5/8" (±1/16")	4 - 6 lbs.
Weathered Edge	1" - 7"	up to 32"	1" - 2 1/2"	7 - 10 lbs.
Wirecut Brick (Oversized)	3 5/8" (±1/16")	11 1/2" (±1/8")	5/8" (±1/16")	4 - 6 lbs.
Wirecut Brick (Standard)	2 5/8" (±1/16")	7 7/8" (±1/8")	5/8" (±1/16")	4 - 6 lbs.

All sizes and weights are nominal and may vary slightly depending on profile.  
 Weight is based on one square foot of stone.  
 Contact Coronado for further details.  
 \* Stone sizes within panels may vary.

Color	View Color On Page
Alaskan Sunset	25, 50
Antique Cream	56, 62, 74, 75, 81
Aspen	56, 68, 74, 76, 86, 103
Bear Creek	82, 100, 101, 110
Blackened Oak	21, 22, 30, 95
Black Forest	12, 14, 27, 48, 49, 50, 105
Bordeaux	35-36, 44, 119
Brookside	47, 50, 58, 62, 66, 82, 100
Cape Cod Grey	34, 47, 55, 56, 57, 64, 66, 67, 75
Carmel Mountain	51, 56, 60, 64, 68, 85, 89, 96, 109
Cathedral Grey	54, 55, 56, 58
Chablis	40, 43, 47, 51, 59, 61, 82, 86
Chalk	11, 37, 81
Champagne	40, 44
Coal Canyon	69, 70
Coastal Brown	37, 56, 60, 64, 74, 86, 93-94
Country Beige	1, 3, 9, 16
Cream	8, 10, 11, 13, 15, 16, 23-24, 25, 27, 28, 95, 116, 117
Dakota Brown	40, 41, 59, 66, 74, 77, 78, 85, 89, 110, 113-114
Etowah	61, 64
Falmouth	54, 58
Florentine	41, 95, 127
Foxhill Blend	69, 70
French White	1, 2, 3, 9
Grey	27, 38
Greycliffe	63, 65
Grey Granite	2, 29, 121-122
Grey Quartzite	44, 52, 60, 62, 67, 73, 74, 87, 88, 96, 119, Back Cover
Huron	50, 52, 54, 60, 61, 63, 85
Lompoc	89, 113-114, 115, 116, 117
Madison County	38, 59, 88
Monarch	62, 64
Mountain Sunset	83-84, 88
Mount Vernon	4, 53
Northland	4, 53
Oakbrook	30, 50
Palazzo	33, 38
Pine Creek	31-32
Prairie Moss	42, 120
Provo Canyon Grey	39, 40, 60
Roman	Cover, 12, 115
Sahara Beige	7, 81
Sand Dune	79, 80
Sandstone	71-72, 76
Silver Ash	1, 4, 5-6, 7, 9, 10, 14, 16, 53
Smoke	2, 29
Smokey Grey	45-46, 68
Texas Cream	74, 75
Verona	40, 43, 95
Vista Pointe	27, 53, 59, 62
Volterra	39, 40, 43
Walnut	25, 27
White	4, 27, 28, 48, 49, 50, 102, 116

Toll Brothers www.tollbrothers.com	Builder CA, AZ, NV	Cover, 8, 21, 23-24, 37, 42, 47, 49t, 54, 55t, 57, 76, 102, 105b, 106, 108, 110, 112, 127
LandCreativeInc. www.landcreativeinc.com	Landscape Architect Costa Mesa, CA	Cover
Arthur Rutenberg Homes www.arthurrutenberghomes.com	Builder Clearwater, FL	Back Cover, 35-36, 39, 73
Rob Harris Productions, Inc. www.rob-harris.com	Photographer Tampa, FL	Back Cover, 35-36, 39, 73
Studio V www.studiovinteriors.com	Interior Architect Scottsdale, AZ	3
Infinity Home Collection www.infinityhomecollection.com	Builder Denver, CO	5-6, 9, 85
Zephyr www.zephyrpartners.com	Builder Encinitas, CA	12
William Lyon Homes www.lyonhomes.com	Builder Newport Beach, CA	13, 34
Vance Fox Photography www.vancefox.com	Photographer Reno, NV	13, 34
Applied Photography LLC www.apgs.net	Photographer Orange, CA	17-18, 26
Lennar www.lennar.com	Builder Miami, FL	17-18, 20, 22, 27, 29, 30
KB Home www.kbhome.com	Builder Los Angeles, CA	25
SDK Atelier www.sdkatelier.com	Architect Irvine, CA	27, 30
Eric Figge Photography www.ericfiggephoto.com	Photographer Orange, CA	27, 30
Wendy Black Rodgers Interior www.wbrint.com	Interior Designer Scottsdale, AZ	39b
Castone www.castone.org	Distributor Knoxville, TN	38
Timber Ridge Properties www.timberidgeproperties.net	Builder Denver, CO	40, 69t, 74, 77
Weber Design Group www.weberdesigngroup.com	Builder Naples, FL	41
Tom Harper www.tomharperphotography.com	Photographer Naples, FL	41
Partners In Building www.partnersinbuilding.com	Builder Houston, TX	49b
Sustain Scape www.sustainscapeaz.com	Landscape Designer Scottsdale, AZ	60
Process Design Build, L.L.C. www.processdesignbuild.com	Builder Tucson, AZ	66
Van Metre Homes www.vanmetrehomes.com	Builder Ashburn, VA	67
Veranda Estate Homes www.verandaestatehomes.com	Builder Calgary, AB	71-72
Shea Homes www.sheahomes.com	Builder Gilbert, AZ	82, 109
Aron Photography www.aronphoto.com	Photographer Encinitas, CA	85
Frontier Homes www.fhcommunities.com	Builder Moreno Valley, CA	86
EON Design Group www.eondesignco.com	Designer Los Angeles, CA	93-94
CalAtlantic Homes www.calatlantichomes.com	Builder Las Vegas, NV	97-98
Camelot Homes www.camelothomes.com	Builder Scottsdale, AZ	101
Meritage Homes www.meritagehomes.com	Builder Phoenix, AZ	104
Arizona Stone www.arizonastone.com	Distributor Phoenix, AZ	105t
Mark Boisclair Photography, Inc. www.markboisclair.com	Photographer Phoenix, AZ	111
Maracay Homes www.maracayhomes.com	Builder Scottsdale, AZ	111



## 50 YEAR LIMITED WARRANTY

Coronado Stone Products' wall veneers are protected under this warranty for a period of 50 years from the date purchased, when used on a vertical structure which conforms to local building codes and when installed in accordance with the manufacturer's instructions. Warranty coverage specifically excludes: damage resulting from structure settlement and other types of wall movement, contact with paint or chemicals, discoloration due to contaminants, staining, oxidation and water damage.

This warranty covers only manufacturing defects in Coronado Stone Products' wall veneers and is limited to the replacement or repair of defective materials only and does not cover the cost of removal or installation of defective products. This warranty is limited to the original purchaser and is non-transferable to any subsequent owner.



Tuscan Villa® - Florentine

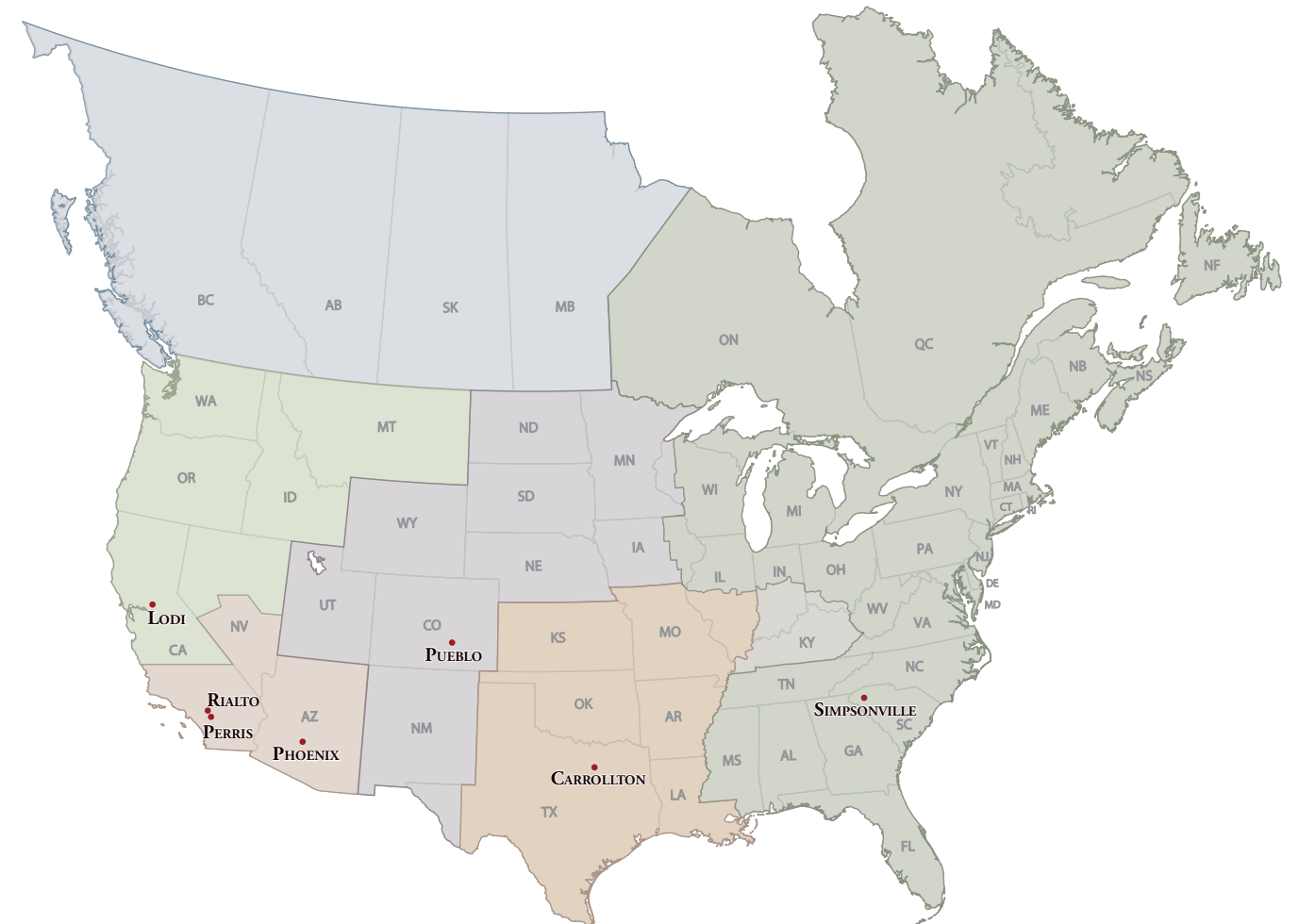
In 1960, there was only one stone manufactured in California. It was a 2½' x 4' sheet of concrete which was broken up into random shapes at the job site. Mel Bacon saw the need for something better and started making his own stone. He soon developed the first random shaped stones from individual molds which led to the development of many of today's popular varieties of ledge stones and ashlar patterns.

As a mason, Mel experienced the difficulty of installing stone that was not created with the installer in mind. It was heavy and the shapes and sizes were difficult to piece together. He realized that through proper pattern and mold design, ease of installation could be achieved. From that moment, ease of installation became the benchmark for every pattern of stone Mel created. Easy installation is not only a time saver, it's a project saver.

The pride we take in the creation of our product shows in the quality experience you will enjoy as one of our valued customers. Give Coronado the opportunity to make you a believer. Our mission is your satisfaction!

## OVER 65 YEARS OF MANUFACTURING EXCELLENCE

Coronado manufactures and distributes its high quality stone at seven factories conveniently located across North America



Northwest Region serviced by the Lodi, CA Manufacturing Facility  
**(209) 334-1380**

Southwest Region serviced by the Perris, CA Manufacturing Facility  
**(800) 847-8663**

Mountain Region serviced by the Pueblo, CO Manufacturing Facility  
**(719) 470-7381**

Desert Region serviced by the Phoenix, AZ Manufacturing Facility  
**(602) 732-6558**

Central Region serviced by the Carrollton, TX Manufacturing Facility  
**(972) 434-2515**

Southeast Region serviced by the Simpsonville, SC Manufacturing Facility  
**(864) 962-1221**





Old World Ledge - Grey Quartzite

Five Dollars



**CORONADO**<sup>®</sup>  
STONE PRODUCTS

342 Perry Street • Perris, CA 92571  
Phone: (800) 847-8663 • Fax: (909) 357-7362  
sales@coronado.com  
WWW.CORONADO.COM

Due to photographic and printing variations, brochure colors may not be accurate. All sizes are nominal.  
We suggest examination of Coronado product samples prior to purchase.